

# PILLCAM™ CAPSULE ENDOSCOPY PLATFORM

Visualize  
with confidence



**PillCam™**  
SB 3 capsule



**PillCam™**  
Crohn's capsule



**PillCam™**  
COLON 2 capsule



**PillCam™**  
Patency capsule

**PATIENT COMFORT.**  
**PATIENT SAFETY.**  
**PATIENT-FRIENDLY.**



Noninvasive



No Sedation



No Radiation

**Medtronic**  
Further. Together

## PillCam™, a lasting commitment to GI visualization

The PillCam™ capsule endoscopy platform enables comprehensive GI tract imaging—and supports you in providing the very best care.

Given Imaging, now owned by Medtronic, was the pioneer in capsule endoscopy, developing new clinically backed products for an increasing number of applications. More than 2,5 million patients – both inpatients and outpatients – from around the globe have already benefited from the advantages of this established method.

## PillCam™ software v9 – Better experience. More powerful tools.

The PillCam™ capsule endoscopy platform sets new standards in image analysis. A combination of the latest capsule technology and software algorithms provide physicians and medical staff with a good balance of diagnostic accuracy and reading efficiency.

PillCam™ software v9 is faster, simpler, and more intuitive.<sup>1</sup> It offers several smart tools and features to help you provide the optimal GI care for your patients.

Compatible with all PillCam™ capsule models.

### Four Capsules - One System

The PillCam™ capsule endoscopy platform offers the ability to visualize the small bowel as well as the colon in excellent image quality, while the PillCam™ patency capsule ensures a safe capsule passage.



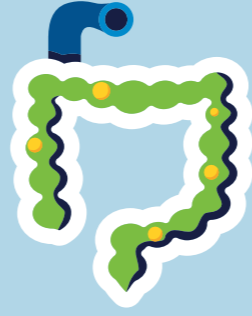
GI Bleeding



Iron Deficiency Anemia



Crohn's Disease



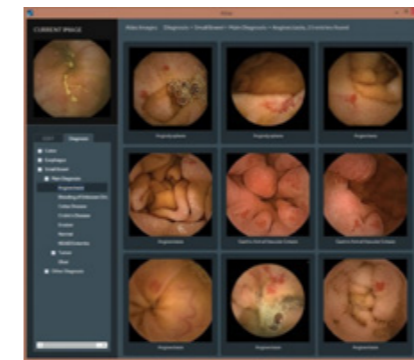
Polyps



Top 100 Mode

### Efficient reading

- Faster read time: Smarter software algorithms help you achieve a faster read time, compared to previous versions.<sup>1</sup>
- Top 100\*: See the most clinically relevant study images to help you identify pathologies.
- QuickView\*: Clinically validated algorithm provides rapid study preview in a few minutes (review of full video is still required).



Improved atlas

### Diagnostic confidence

- Improved image atlas: New crisp and clear images to aid in more confident diagnosis.
- Integrated virtual chromoendoscopy to enhance visualization of suspicious patterns (FICE).
- New and improved GI map: Provides a more immediate representation of the progress of the capsule through the small bowel and colon. This feature is available with both the PillCam™ sensor array and belt. \*\*



Study comparison

### Therapy support

- Real time viewing provided by the Pillcam™ recorder 3
- Software-based polyp and ulcer size estimation tool (with PillCam™ COLON 2 capsule and PillCam™ Crohn's capsule respectively)\*\*\*
- Ability to compare images, videos and treatment over time (available in combination with PillCam™ Crohn's capsule).
- Dedicated tools for assessment of Crohn's disease activity
- GI Map to effectively identify and show Crohn's disease activity along the GI tract



**PillCam™ SB 3 capsule**  
The gold standard in small bowel diagnostics



GI Bleeding    Iron Deficiency Anemia    Crohn's Disease

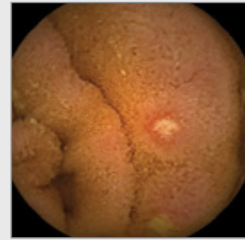
**PillCam™ COLON 2 capsule**  
Direct visualization of the colon with a non-invasive procedure



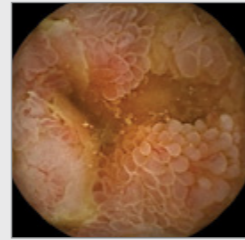
Polyps



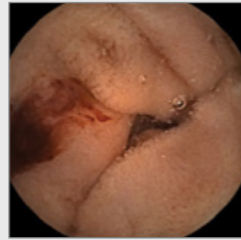
Ampulla of Vater



Ulcer



Edematous Villi



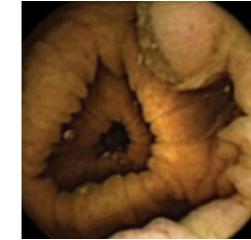
Active Bleeding

**High accuracy:**

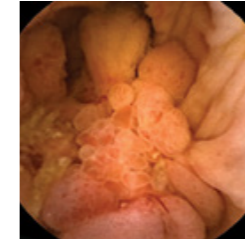
- Excellent image quality
- Improved efficiency
- Exclusive software features

**Complete and detailed visualization of the small bowel through:**

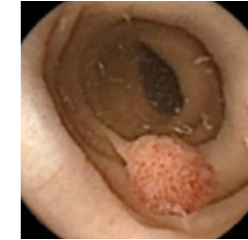
- Adaptive Frame Rate (AFR): 2-6 images per second based on the capsule movement
- Wide angle view
- Increased battery capacity



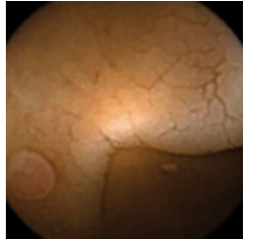
Sessile Serrated Polyp with Mucous Cap  
\*Confirmed by histology report



Large Mass



Pedunculated Polyp



Sessile Polyp

**Bi-directional communication between the PillCam™ COLON 2 capsule and the PillCam™ recorder 3 enables:**

- Compliance with physician instructions on bowel prep through active reminders for the patient throughout the procedure
- Automatic detection of the small bowel to ensure gastric emptying
- Image acquisition that is uniquely suited to each patient

**Optimal visualization of colon mucosa:**

- 2 camera heads
- Adaptive Frame Rate (AFR): changes acquisition rate from 4 fps to 35 fps when the capsule is moving quickly
- Extra wide angle of view allows for maximum tissue coverage (172° per camera)
- System optimizes video length while also saving battery energy



**PillCam™ Crohn's capsule**  
Pan-intestinal imaging for a pan-intestinal disease

**Efficient and Patient-friendly Monitoring:**

The PillCam™ Crohn's platform is the only product that allows physicians to directly and non-invasively visualize the small bowel and colon in a single procedure, potentially reducing the number of exams and making disease management more convenient.

- 172 degree field of view (per camera)
- No sedation
- No radiation

**Comprehensive Visualization:**

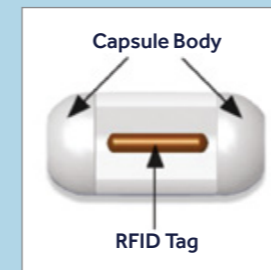
Advanced optics and innovative imaging features allow for a thorough evaluation of Crohn's disease activity and mucosal healing

Adaptive Frame Rate (AFR) technology increases the rate of image capture from 4 to 35 frames per second based on the speed of the capsule.



**PillCam™ patency capsule**  
Safety has the highest priority

- The PillCam™ patency capsule is recommended to detect strictures prior to the procedure<sup>2</sup>
- Dissolvable and biocompatible
- Lactose body with 10% barium enables fluoroscopy visualization
- Timer plugs facilitate controlled disintegration of capsule body
- An RFID tag helps you locate the capsule easily
- Now compatible with PillCam™ SB 3 capsule, PillCam™ COLON 2 capsule and PillCam™ Crohn's capsule



Crohn's Disease

## PillCam™ capsule endoscopy equipment

The optimal interaction of video capsule, data recorder, sensor belt and PillCam™ software makes the PillCam™ capsule endoscopy platform the reference standard in capsule endoscopy.



### PillCam™ recorder 3

- Active control of capsule frame rate
- Real time viewing with color LED monitor
- Audio and visual alerts to remind the patient of the next procedure steps
- Integrated rechargeable battery



### PillCam™ sensor belt

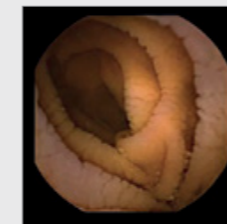
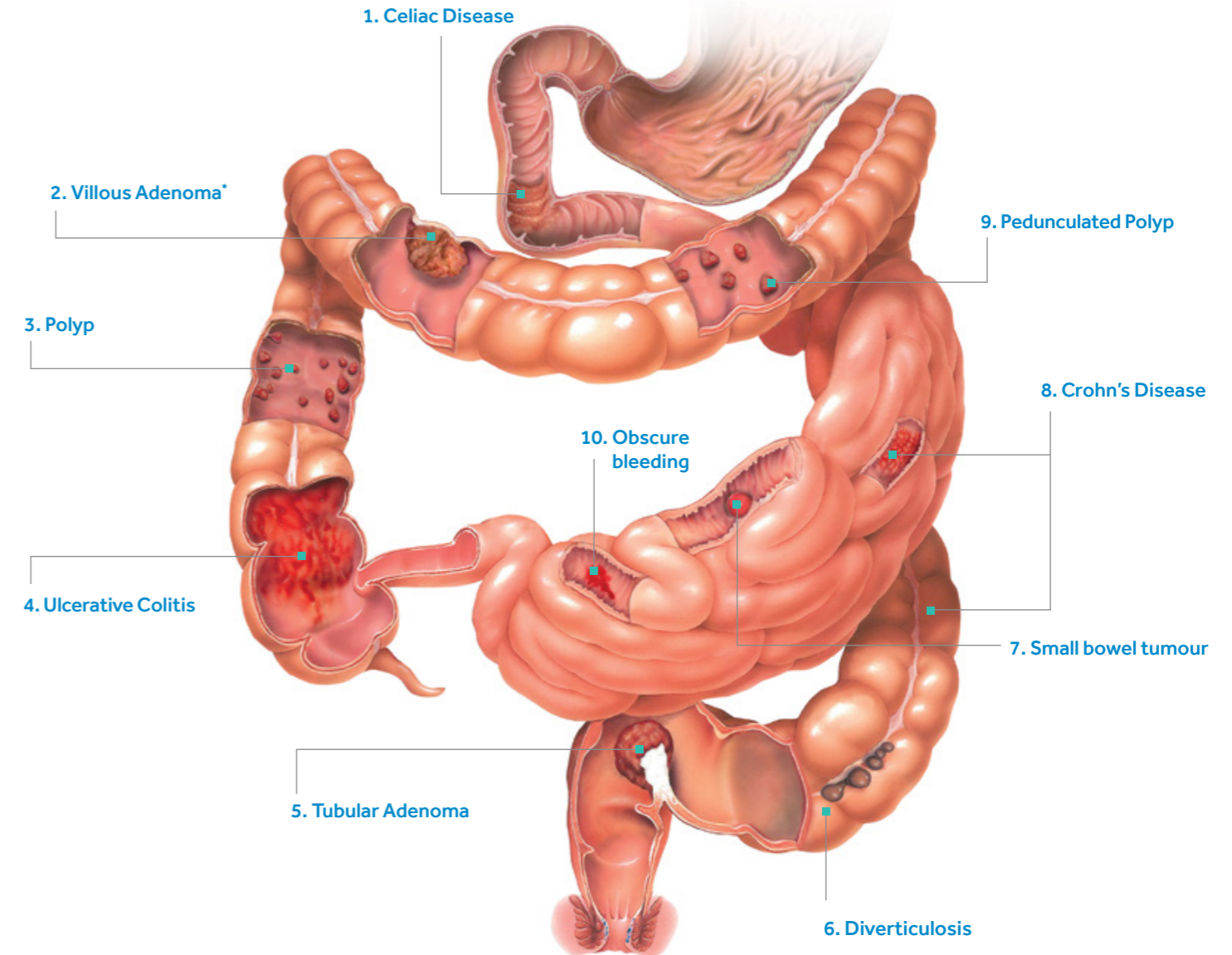
- Very comfortable
- Easier and more convenient procedure for the medical staff
- No need for shaving, skin preparation or adhesive pads reduces preparation and post procedure time



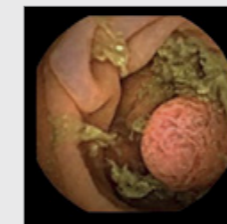
### More flexibility

- PillCam™ Software can provide the solution whether you need flexible access to software and data from different places in the hospital through free of charge PillCam™ Reader Software, or when care does not fall within office hours, allowing you to access your PillCam™ studies when and where it's most convenient for you (PillCam™ Web Software).

The PillCam capsule endoscopy platform can be used to visualize many pathologies of the GI tract:



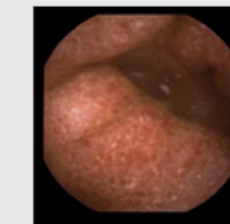
1. Celiac Disease



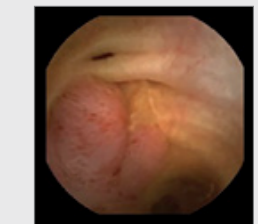
2. Villous Adenoma\*



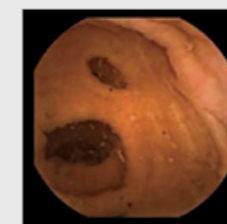
3. Polyp



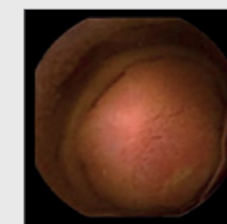
4. Ulcerative Colitis



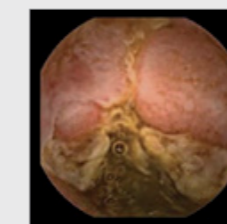
5. Tubular Adenoma



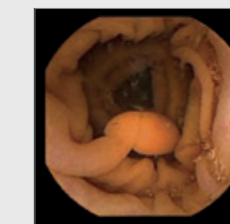
6. Diverticulosis



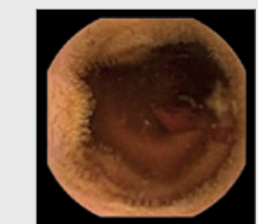
7. Gastrointestinal stromal tumour



8. Crohn's Disease



9. Pedunculated Polyp



10. Obscure bleeding

\* validated through biopsy

## Clinical evidence

- More than 2000 publications on the PillCam™ capsule endoscopy platform
- More than 2,5 million procedures performed using PillCam™
- Periodic literature reviews and newsletters available

## Training

- Curriculum developed by capsule experts
- Capsule training, performed exclusively on the Pillcam™ capsule endoscopy platform
- Quality guidelines for capsule endoscopy
- Initial on-site training

## Technical service

- Replacement service
- Consultations with highly qualified service technicians
- Customer-friendly handling of all technical inquiries
- On-site support provided by dedicated Medtronic personnel



### References

1. REP-05-11-044 Rapid 9 SB3 AAM report. DOC-1000070597, April 4, 2016 (data on file).
2. Ladas S. D. et al., European Society of Gastrointestinal Endoscopy (ESGE): Recommendations (2009) on clinical use of video capsule endoscopy to investigate small-bowel, esophageal and colonic diseases. Endoscopy 2010; 42: 220–227.

- \* The feature is not intended to detect pathology in lieu of a physician and should not be used as a substitute for reviewing the entire study
- \*\* Localization of the capsule is only an estimate. Use of reader defined landmarks may improve this tool. Discretion should be used when relying on the capsule progress indicator and localization tools to make diagnostic and treatment decision
- \*\*\* Ulcer Size Estimation is a tool for research purposes only and the values displayed should not be used in making diagnostic or treatment decisions. Polyp Size Estimation measurement is only an estimate. Use discretion when making diagnostic or treatment decisions

# Medtronic

IMPORTANT: Please refer to the package insert for complete instructions, contraindications, warnings and precautions.

© 2019 Medtronic. All rights reserved. Medtronic, Medtronic logo and Further, Together are trademarks of Medtronic.™\*\* Third party brands are trademarks of their respective owners. All other brands are trademarks of a Medtronic company. 18-emea-pillcam-capsule-endoscopy-platform-brochure-europe-2639658

[medtronic.com/covidien/en-gb/index.html](https://www.medtronic.com/covidien/en-gb/index.html)