



Colon Capsule Endoscopy System



Better Quality, to the “End”

Colorectal cancer (CRC) is the 3rd most common cancer worldwide, a deadly disease that kills 935,173 people in 2020, accounting for 9.4% of cancer-related deaths. ^[1]Routine colonoscopy screening can prevent progression to CRC and detect CRC at an early stage, thereby reducing the incidence and mortality.

As a non-invasive, disposable and safe diagnostic tool, colon capsule endoscopy could be an alternative choice of screening for colonic diseases.

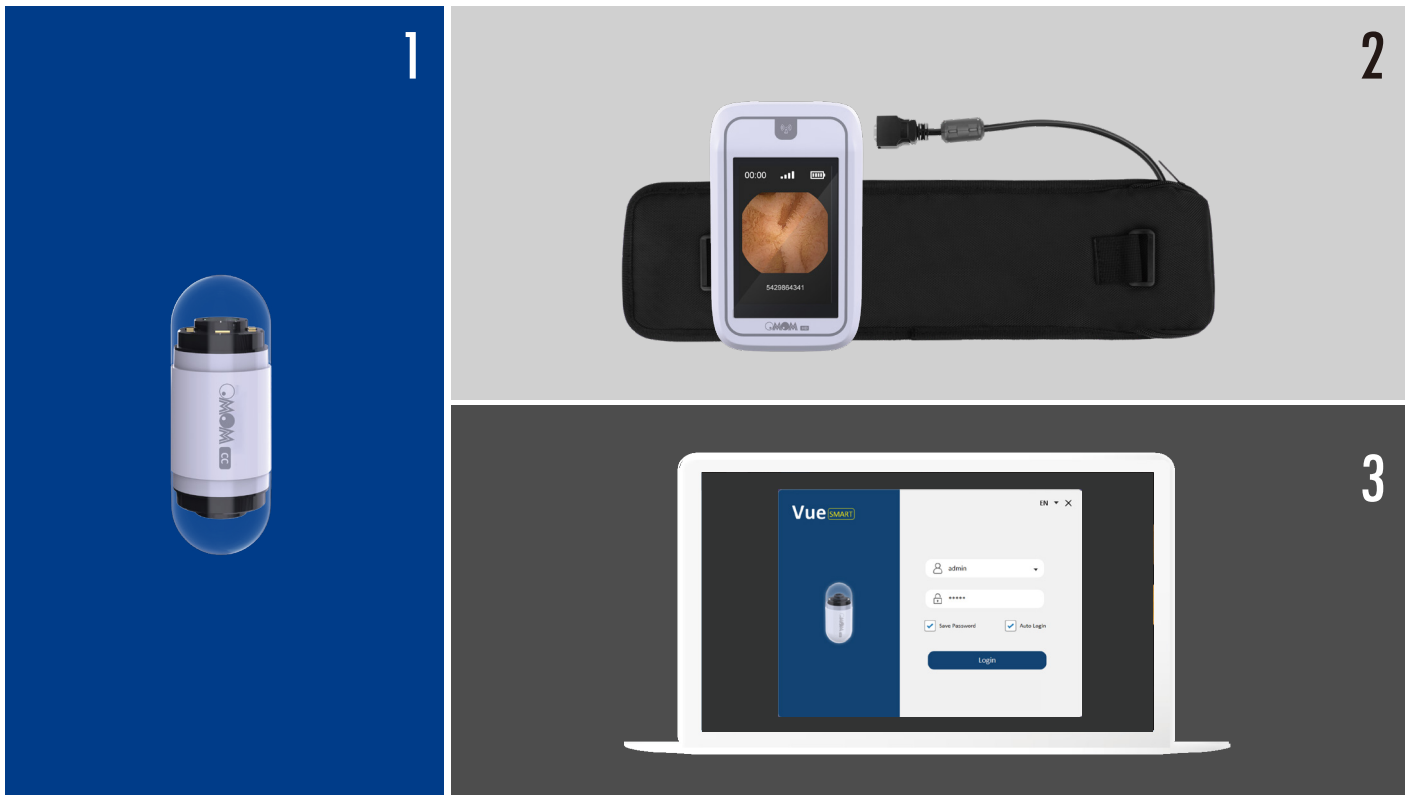
OMOM Colon Capsule (*OMOM CC*) is the latest innovation from JINSHAN company. With improved image quality and evolving AI software technology, *OMOM CC* will provide you with the better quality non-invasive solution to visualize colon.

[1] Source: Globocan 2020

Introducing OMOM CC

See clearer and more.

OMOM CC consists of colon capsule¹, recording unit² and VUE Smart software³. With enhanced image quality, strong battery capacity and revolutionary AI powered software, OMOM CC aims to make diagnostic colonoscopy easier and smarter.



Hardware features



360*360 Pixel

Highest resolution
Unparalleled clarity



0-50 mm

Extended depth of field
More vivid details



4-35 FPS

Enhanced sampling frequency
Upgraded SpeedSense



344 Degrees

Ultra-wide angle of view
Improved coverage



Compact Capsule

Ergonomic design
Dimension: 31.5mm*11.6mm



ONE Recorder

For ALL capsules
Compatible with OMOM HD

Excellent Performance in Colonic Visualization

See clearer

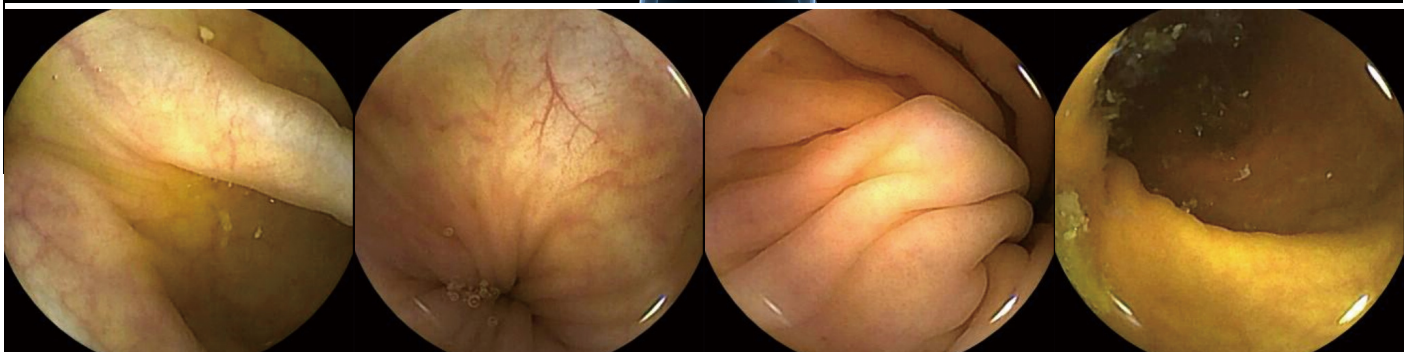
The resolution of *OMOM CC* is 360*360. The improved image quality helps with clinical evaluation and more accurate diagnosis.

See more

Equipped with dual cameras, extra wide angle of view and high adaptive frame rate, *OMOM CC* can help clinicians to see more.

New patient instruction

After capsule ingestion, the recorder will instruct patients in medicine regimens automatically to ensure the better colonic visualization.



VUE Smart Software

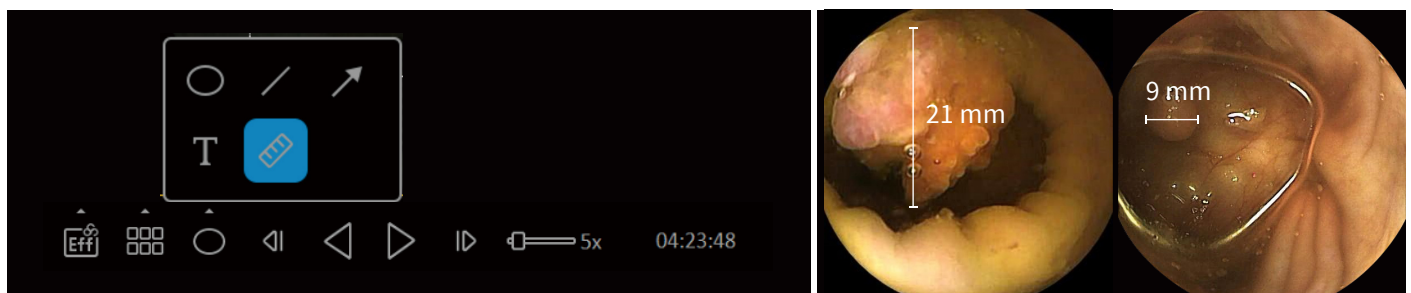
See faster

Redundancy deletion is the major feature of *VUE Smart* software. When downloading the data, *VUE Smart* processes the raw files by deleting up to 95% of redundant images automatically. *VUE Smart* platform provides single and dual cameras reading interfaces. For each camera, there are 1 and 6 images can be chosen to display at the same time.



Protruding lesions measurement

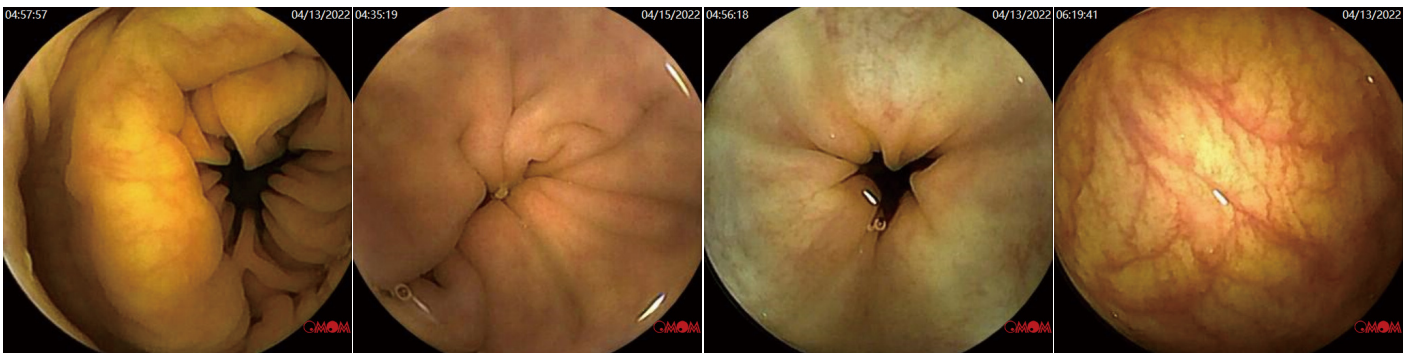
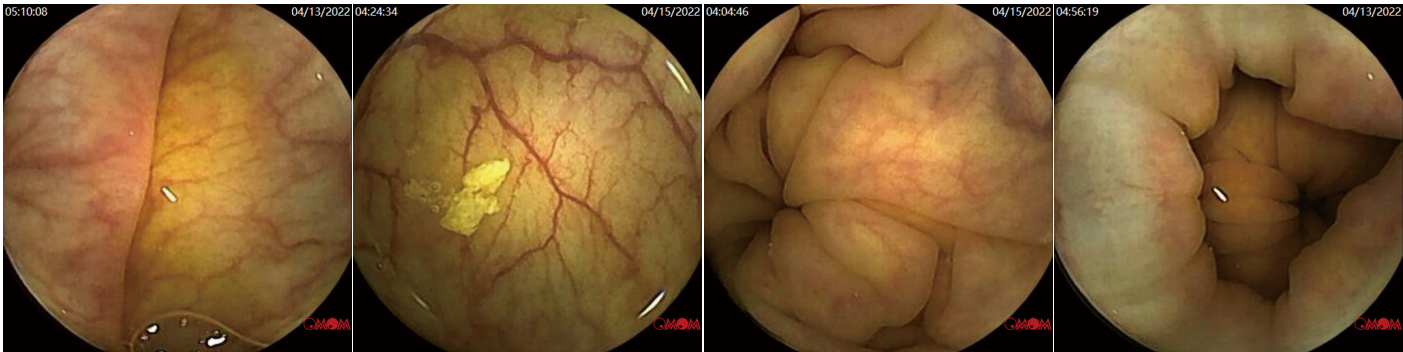
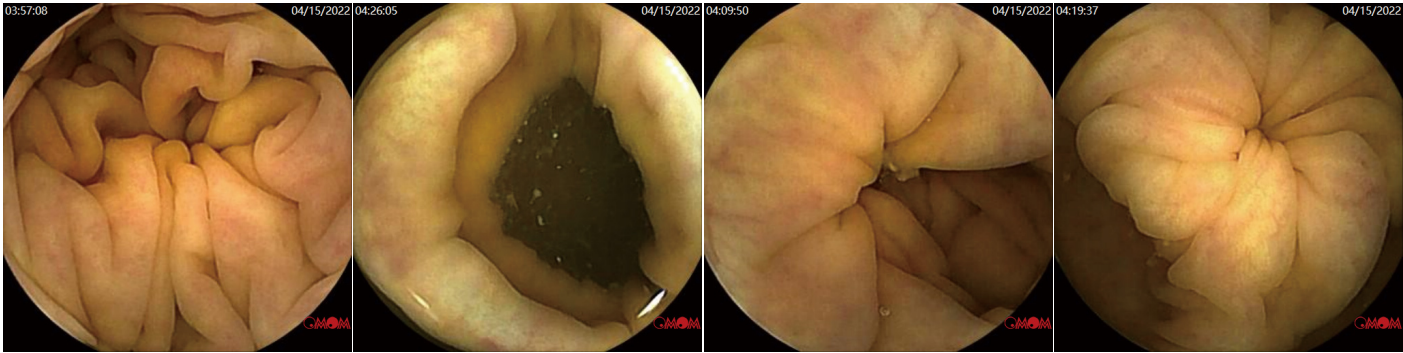
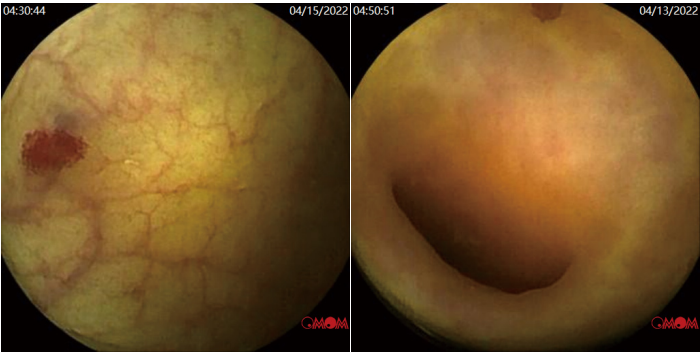
VUE Smart is equipped with a measurement tool. Colonic protruding lesions are the most common abnormalities in colonic disease, such as polyps, tumors and varix. Measuring sizes of those lesions is necessary for patient management.



Powered by evolving AI

After trained and validated with hundreds of cases in multi-centers, AI function for *OMOM CC* is available in *VUE Smart* platform now.

Image Gallery



Chongqing Jinshan Science & Technology (Group) Co., Ltd

NO.18 Nishang Road, Yubei District, 401120, Chongqing, China

T: +86-23-8609 8096 F: +86-23-8609 8777

Email: international@jinshangroup.com

www.jinshangroup.com

